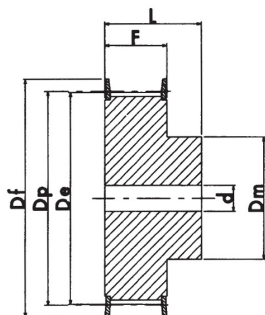


PULEGGE DENTATE TIPO HTD - MOZZO GREZZO

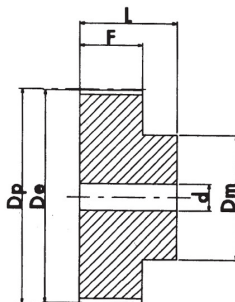
PASSO 5mm PER CINGHIA LARGA 25mm



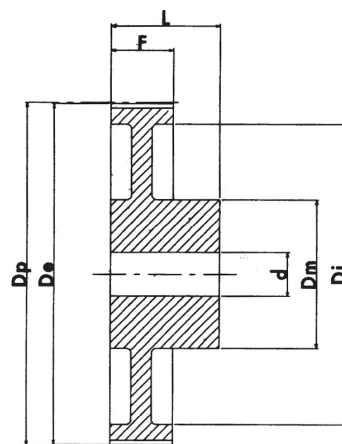
Materiale
AC = ACCIAIO
AL = ALLUMINIO
GH = GHISA



esecuzione 1F



esecuzione 8



esecuzione 3

N°Denti	Esecuzione	Flangia	Dp	De	Df	Dm	Di	F	L	d	Materiale	Codice
			mm	mm	mm	mm	mm	mm	mm			
12	1F	✓	19.10	17.96	23.0	13.0	-	30.5	36	-	AC	125M25F
14	1F	✓	22.28	21.14	25.0	13.0	-	30.5	36	6.0	AC	145M25F
15	1F	✓	23.87	22.73	28.0	16.0	-	30.5	36	6.0	AC	155M25F
16	1F	✓	25.46	24.32	28.0	16.5	-	30.5	36	6.0	AC	165M25F
18	1F	✓	28.65	27.51	32.0	20.0	-	30.5	36	6.0	AC	185M25F
20	1F	✓	31.83	30.69	36.0	23.0	-	30.5	36	6.0	AC	205M25F
21	1F	✓	33.42	32.28	38.0	24.0	-	30.5	38	6.0	AC	215M25F
22	1F	✓	35.01	33.87	39.0	25.5	-	30.5	38	6.0	AC	225M25F
24	1F	✓	38.20	37.06	42.0	27.0	-	30.5	38	6.0	AC	245M25F
26	1F	✓	41.38	40.24	44.0	30.0	-	30.5	38	6.0	AC	265M25F
28	1F	✓	44.56	43.42	48.0	30.5	-	30.5	38	6.0	AC	285M25F
30	1F	✓	47.75	46.60	51.0	35.0	-	30.5	38	6.0	AC	305M25F
32	1F	✓	50.93	49.79	54.0	38.0	-	30.5	38	8.0	AC	325M25F
36	1F	✓	57.30	56.16	60.0	38.0	-	30.5	38	8.0	AC	365M25F
40	1F	✓	63.66	62.52	71.0	38.0	-	30.5	38	8.0	AC	405M25F
44	8		70.03	68.89	-	38.0	-	30.5	40	8.0	AL	445M25
48	3		76.39	75.25	-	38.0	61	30.5	40	8.0	AL	485M25
60	3		95.49	94.35	-	50.0	80	30.5	40	8.0	AL	605M25
72	3		114.59	113.45	-	50.0	100	30.5	40	8.0	AL	725M25

