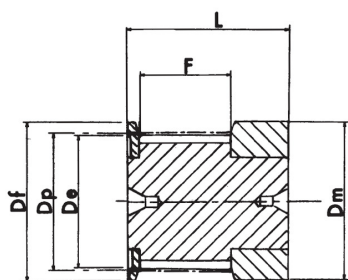


# PULEGGE DENTATE TIPO HTD - MOZZO GREZZO

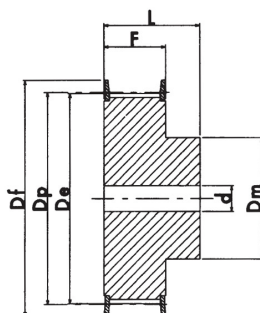
## PASSO 3mm PER CINGHIA LARGA 15mm



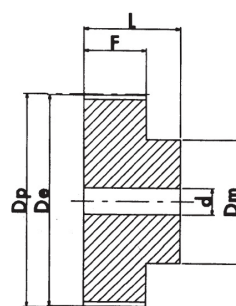
Materiale  
AC = ACCIAIO  
AL = ALLUMINIO  
GH = GHISA



esecuzione 0F



esecuzione 1F



esecuzione 8

N°Denti	Esecuzione	Flangia	Dp mm	De mm	Df mm	Dm mm	F mm	L mm	d mm	Materiale	Codice
10	0F	✓	9.55	8.79	13.0	13.0	17.0	26.0	-	AL	103M15F
12	0F	✓	11.46	10.70	15.0	15.0	17.0	26.0	-	AL	123M15F
14	0F	✓	13.37	12.61	16.0	16.0	17.0	26.0	-	AL	143M15F
15	0F	✓	14.32	13.56	17.5	17.5	17.0	26.0	-	AL	153M15F
16	1F	✓	15.28	14.52	17.5	10.0	19.5	26.0	4.0	AL	163M15F
18	1F	✓	17.19	16.43	20.0	11.0	19.5	26.0	6.0	AL	183M15F
20	1F	✓	19.10	18.34	23.0	13.0	19.5	26.0	6.0	AL	203M15F
21	1F	✓	20.05	19.29	25.0	14.0	19.5	26.0	6.0	AL	213M15F
22	1F	✓	21.01	20.25	25.0	14.0	19.5	26.0	6.0	AL	223M15F
24	1F	✓	22.92	22.16	25.0	14.0	19.5	26.0	6.0	AL	243M15F
26	1F	✓	24.83	24.07	28.0	16.0	19.5	26.0	6.0	AL	263M15F
28	1F	✓	26.74	25.98	32.0	18.0	19.5	26.0	6.0	AL	283M15F
30	1F	✓	28.65	27.89	32.0	20.0	19.5	26.0	6.0	AL	303M15F
32	1F	✓	30.56	29.80	36.0	22.0	19.5	26.0	6.0	AL	323M15F
36	1F	✓	34.38	33.62	39.0	26.0	20.0	30.0	6.0	AL	363M15F
40	1F	✓	38.20	37.44	42.0	28.0	20.0	30.0	6.0	AL	403M15F
44	1F	✓	42.02	41.26	48.0	33.0	20.0	30.0	6.0	AL	443M15F
48	8		45.84	45.08	-	33.0	20.0	30.0	8.0	AL	483M15
60	8		57.30	56.54	-	33.0	20.0	30.0	8.0	AL	603M15
72	8		68.75	67.99	-	33.0	20.0	30.0	8.0	AL	723M15

