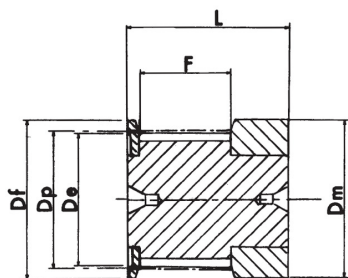


# PULEGGE DENTATE TIPO HTD - MOZZO GREZZO

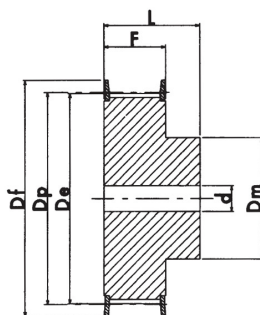
## PASSO 3mm PER CINGHIA LARGA 9mm



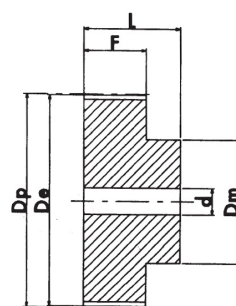
Materiale  
AC = ACCIAIO  
AL = ALLUMINIO  
GH = GHISA



esecuzione 0F



esecuzione 1F



esecuzione 8

N°Denti	Esecuzione	Flangia	Dp mm	De mm	Df mm	Dm mm	F mm	L mm	d mm	Materiale	Codice
10	0F	✓	9.55	8.79	13.0	13.0	10.2	17.5	-	AL	103M09F
12	0F	✓	11.46	10.70	15.0	15.0	10.2	17.5	-	AL	123M09F
14	0F	✓	13.37	12.61	16.0	16.0	10.2	17.5	-	AL	143M09F
15	0F	✓	14.32	13.56	17.5	17.5	10.2	17.5	-	AL	153M09F
16	1F	✓	15.28	14.52	17.5	10.0	12.8	20.6	4.0	AL	163M09F
18	1F	✓	17.19	16.43	20.0	11.0	12.8	20.6	6.0	AL	183M09F
20	1F	✓	19.10	18.34	23.0	13.0	12.8	20.6	6.0	AL	203M09F
21	1F	✓	20.05	19.29	25.0	14.0	12.8	20.6	6.0	AL	213M09F
22	1F	✓	21.01	20.25	25.0	14.0	12.8	20.6	6.0	AL	223M09F
24	1F	✓	22.92	22.16	25.0	14.0	12.8	20.6	6.0	AL	243M09F
26	1F	✓	24.83	24.07	28.0	16.0	12.8	20.6	6.0	AL	263M09F
28	1F	✓	26.74	25.98	32.0	18.0	12.8	20.6	6.0	AL	283M09F
30	1F	✓	28.65	27.89	32.0	20.0	12.8	20.6	6.0	AL	303M09F
32	1F	✓	30.56	29.80	36.0	22.0	12.8	20.6	6.0	AL	323M09F
36	1F	✓	34.38	33.62	39.0	26.0	13.4	22.2	6.0	AL	363M09F
40	1F	✓	38.20	37.44	42.0	28.0	13.4	22.2	6.0	AL	403M09F
44	1F	✓	42.02	41.26	48.0	33.0	13.4	22.2	6.0	AL	443M09F
48	8		45.84	45.08	-	33.0	13.4	22.2	8.0	AL	483M09
60	8		57.30	56.54	-	33.0	13.4	22.2	8.0	AL	603M09
72	8		68.75	67.99	-	33.0	13.4	22.2	8.0	AL	723M09

