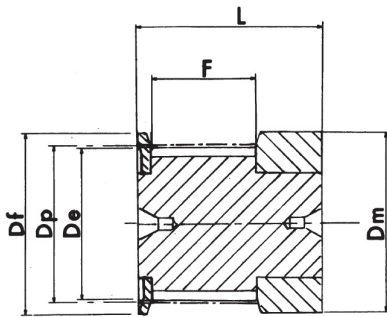


PULEGGE DENTATE TIPO T - MOZZO GREZZO

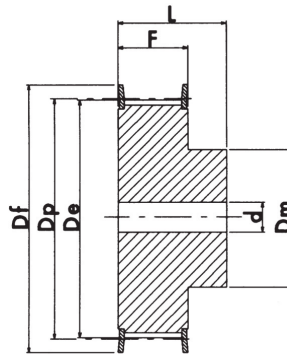
PASSO 2.5mm PER CINGHIA LARGA 6mm



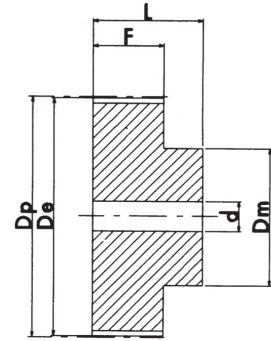
Materiale: Alluminio



ESECUZIONE 0F



ESECUZIONE 1F



ESECUZIONE 2

N°Denti	Esecuzione	Flangia	L	Dp	De	Df	Dm	F	d	Codice
			mm	mm	mm	mm	mm	mm	mm	
12	0F	✓	16	9.60	9.00	13.0	13	9	-	16T2.5Z12F
14	0F	✓	16	11.20	10.60	15.0	15	9	-	16T2.5Z14F
15	0F	✓	16	12.00	11.40	15.0	15	9	-	16T2.5Z15F
16	0F	✓	16	12.80	12.20	16.0	16	9	-	16T2.5Z16F
18	1F	✓	16	14.40	13.80	17.5	10	10	-	16T2.5Z18F
19	1F	✓	16	15.20	14.60	20.0	10	10	-	16T2.5Z19F
20	1F	✓	16	16.00	15.40	20.0	11	10	-	16T2.5Z20F
22	1F	✓	16	17.60	17.00	22.0	11	10	-	16T2.5Z22F
24	1F	✓	16	19.15	18.55	22.0	12	10	4	16T2.5Z24F
25	1F	✓	16	19.95	19.35	25.0	13	10	4	16T2.5Z25F
26	1F	✓	16	20.75	20.15	26.0	14	10	4	16T2.5Z26F
28	1F	✓	16	22.35	21.75	26.0	14	10	4	16T2.5Z28F
30	1F	✓	16	23.95	23.35	26.0	16	10	6	16T2.5Z30F
32	1F	✓	16	25.55	24.95	32.0	16	10	6	16T2.5Z32F
36	1F	✓	16	28.75	28.10	36.0	20	10	6	16T2.5Z36F
40	1F	✓	16	31.90	31.30	38.0	22	10	6	16T2.5Z40F
44	2		16	35.10	34.50	-	24	10	6	16T2.5Z44
48	2		16	38.30	37.70	-	26	10	6	16T2.5Z48
60	2		16	47.85	47.25	-	34	10	8	16T2.5Z60

