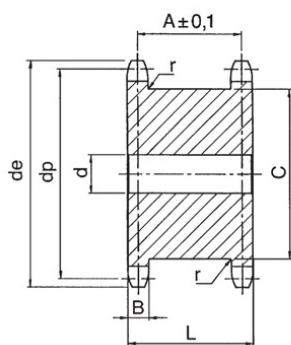


# CORONE DOPPIE PER DUE CATENE SEMPLICI AFFIANCATE



**5/8" x 3/8"**

R. 10.16 10 B-1

MATERIALE: C 45 UNI 7845

Z	De	Dp	d	A	B h14	C max	L	r
13	73.17	66.33	15	27.9	9.1	48	37	0.6
15	83.19	76.35	15	27.9	9.1	58	37	0.6
17	93.23	86.39	15	27.9	9.1	68	37	0.6
18	98.30	91.42	15	27.9	9.1	72	37	0.6
19	103.29	96.45	15	27.9	9.1	79	37	0.6
20	108.40	101.49	19	27.9	9.1	82	37	0.6
21	113.35	106.51	19	27.9	9.1	89	37	0.6
23	123.43	116.59	19	27.9	9.1	99	37	0.6
25	133.50	126.66	19	27.9	9.1	109	37	0.6