

PIGNONI SEMPLICI

DENTI TEMPRATI AD INDUZIONE

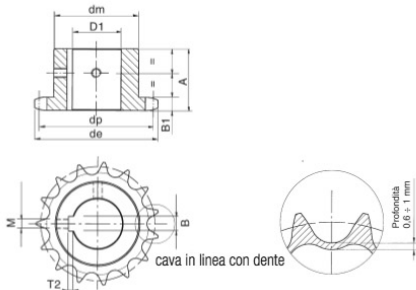
FORO + CAVA + FORI VITE



R. Garotti & F. gliò s.r.l.

1" x 17.02 16B-1

per catene a rulli secondo
DIN 8187 - ISO/R 606



Denti temprati ad induzione HRC 45 ÷ 53

PIGNONE

LARGHEZZA DENTE PIGNONE B_1 16.2 mm

CATENA

PASSO 25.4 mm

LARGHEZZA INTERNA 17.02 mm

RULLO \emptyset 15.88 mm

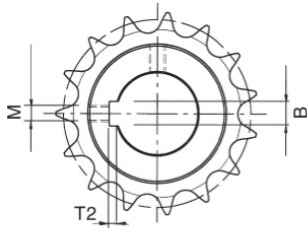
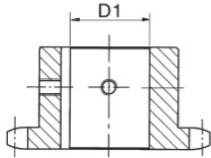
MATERIALE: C 45 UNI 7845

Z	d _e	d _p	d _m	A	D ₁	Z	d _e	d _p	d _m	A	D ₁	Z	d _e	d _p	d _m	A	D ₁
12	109.71	98.14	69	40	25	16	141.0	130.20	100	45	30	20	173.2	162.38	100	45	30
					28						32						32
					30						35						35
					32						38						38
					35						40						40
					38						42						42
					40						45						45
					42						48						48
					45						50						50
13	117.2	106.14	78	40	25	17	149.4	138.22	100	45	30	21	181.6	170.43	110	50	30
					28						32						32
					30						35						35
					32						38						38
					35						40						40
					38						42						42
					40						45						45
					42						48						48
					45						50						50
14	125.7	114.15	84	40	25	18	157.0	146.28	100	45	30	23	198.1	186.1	110	50	30
					28						32						32
					30						35						35
					32						38						38
					35						40						40
					38						42						42
					40						45						45
					42						48						48
					45						50						50
					48												
					50												
15	133.3	122.17	92	40	28	19	165.5	154.33	100	45	30	25	214.2	202.66	110	50	30
					30						32						32
					32						35						35
					35						38						38
					38						40						40
					40						42						42
					42						45						45
					45						48						48
					48						50						50
					50												

PIGNONI SEMPLICI
DENTI TEMPRATI AD INDUZIONE
FORO + CAVA + FORI VITE



Cave DIN 6885 - UNI 6604



cava in linea con dente

D₁ Foro	B Larghezza cava	T2 Profondità cava	M Viti
Ø 12 H7 ^{+0.018} / ₋₀	4 H9 ^{+0.030} / ₋₀	1,8 ^{+0.10} / ₋₀	M4
Ø 14 H7 ^{+0.018} / ₋₀	5 H9 ^{+0.030} / ₋₀	2,3 ^{+0.10} / ₋₀	M4
Ø 15 H7 ^{+0.018} / ₋₀	5 H9 ^{+0.030} / ₋₀	2,3 ^{+0.10} / ₋₀	M4
Ø 16 H7 ^{+0.018} / ₋₀	5 H9 ^{+0.030} / ₋₀	2,3 ^{+0.10} / ₋₀	M4
Ø 18 H7 ^{+0.018} / ₋₀	6 H9 ^{+0.030} / ₋₀	2,8 ^{+0.10} / ₋₀	M5
Ø 19 H7 ^{+0.021} / ₋₀	6 H9 ^{+0.030} / ₋₀	2,8 ^{+0.10} / ₋₀	M5
Ø 20 H7 ^{+0.021} / ₋₀	6 H9 ^{+0.030} / ₋₀	2,8 ^{+0.10} / ₋₀	M5
Ø 22 H7 ^{+0.021} / ₋₀	6 H9 ^{+0.030} / ₋₀	2,8 ^{+0.10} / ₋₀	M5
Ø 24 H7 ^{+0.021} / ₋₀	8 H9 ^{+0.036} / ₋₀	3,3 ^{+0.20} / ₋₀	M6
Ø 25 H7 ^{+0.021} / ₋₀	8 H9 ^{+0.036} / ₋₀	3,3 ^{+0.20} / ₋₀	M6
Ø 28 H7 ^{+0.021} / ₋₀	8 H9 ^{+0.036} / ₋₀	3,3 ^{+0.20} / ₋₀	M6
Ø 30 H7 ^{+0.021} / ₋₀	8 H9 ^{+0.036} / ₋₀	3,3 ^{+0.20} / ₋₀	M6
Ø 32 H7 ^{+0.025} / ₋₀	10 H9 ^{+0.036} / ₋₀	3,3 ^{+0.20} / ₋₀	M8
Ø 35 H7 ^{+0.025} / ₋₀	10 H9 ^{+0.036} / ₋₀	3,3 ^{+0.20} / ₋₀	M8
Ø 38 H7 ^{+0.025} / ₋₀	10 H9 ^{+0.036} / ₋₀	3,3 ^{+0.20} / ₋₀	M8
Ø 40 H7 ^{+0.025} / ₋₀	12 H9 ^{+0.043} / ₋₀	3,3 ^{+0.20} / ₋₀	M10
Ø 42 H7 ^{+0.025} / ₋₀	12 H9 ^{+0.043} / ₋₀	3,3 ^{+0.20} / ₋₀	M10
Ø 45 H7 ^{+0.025} / ₋₀	14 H9 ^{+0.043} / ₋₀	3,8 ^{+0.20} / ₋₀	M12
Ø 48 H7 ^{+0.025} / ₋₀	14 H9 ^{+0.043} / ₋₀	3,8 ^{+0.20} / ₋₀	M12
Ø 50 H7 ^{+0.025} / ₋₀	14 H9 ^{+0.043} / ₋₀	3,8 ^{+0.20} / ₋₀	M12