

# PIGNONI SEMPLICI

## DENTI TEMPRATI AD INDUZIONE

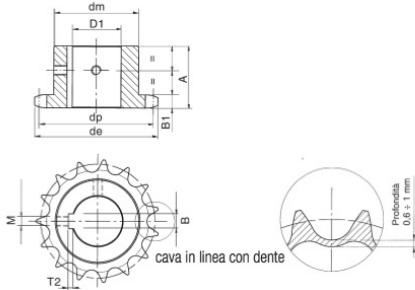
### FORO + CAVA + FORI VITE



*R. Garotti & F. gliò* s.r.l.

### 3/4" x 7/16" 12B-1

per catene a rulli secondo  
DIN 8187 - ISO/R 606



Denti temprati ad induzione HRC 45 ÷ 53

#### PIGNONE

LARGHEZZA DENTE PIGNONE B<sub>1</sub> 11.1 mm

#### CATENA

PASSO 19.05 mm

LARGHEZZA INTERNA 11.68 mm

RULLO Ø 12.07 mm

MATERIALE: C 45 UNI 7845

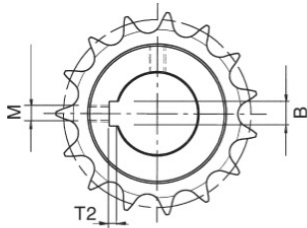
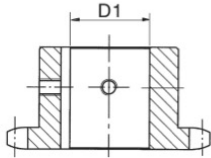
Z	d <sub>e</sub>	d <sub>p</sub>	d <sub>m</sub>	A	D <sub>1</sub>	Z	d <sub>e</sub>	d <sub>p</sub>	d <sub>m</sub>	A	D <sub>1</sub>	Z	d <sub>e</sub>	d <sub>p</sub>	d <sub>m</sub>	A	D <sub>1</sub>
12	81.8	73.6	52	35	20	17	111.2	103.67	80	35	22	23	147.4	139.90	90	40	28
					22						25						30
					24						28						32
					25						30						35
					28						32						38
					30						35						40
					35						38						42
					40						40						45
13	87.1	79.60	58	35	20	18	118.0	109.71	80	35	22	24	154.1	145.94	90	40	28
					22						25						30
					24						28						32
					25						30						35
					28						32						38
					30						35						40
					32						40						42
					35						45						48
					40						50						50
14	93.8	85.61	64	35	20	19	123.3	115.75	80	35	22	25	159.5	152.00	90	40	28
					22						25						30
					24						28						32
					25						30						35
					28						32						38
					30						35						40
					32						40						42
					35						45						48
					40						50						50
15	99.2	91.63	70	35	20	20	129.7	121.78	80	35	22						
					22						25						
					24						28						
					25						30						
					28						32						
					30						35						
					32						40						
					35						45						
					40						50						
16	105.5	97.65	75	35	20	21	135.4	127.82	90	40	22						
					22						25						
					24						28						
					25						30						
					28						32						
					30						35						
					32						40						
					35						45						
					38						50						
					40						50						

**PIGNONI SEMPLICI**  
**DENTI TEMPRATI AD INDUZIONE**  
**FORO + CAVA + FORI VITE**



*R. Garotti & F. gliò* s.r.l.

**Cave DIN 6885 - UNI 6604**



cava in linea con dente

<b>D<sub>1</sub></b> Foro	<b>B</b> Larghezza cava	<b>T<sub>2</sub></b> Profondità cava	<b>M</b> Viti
Ø 12 H7 <sup>+0.018</sup> / <sub>-0</sub>	4 H9 <sup>+0.030</sup> / <sub>-0</sub>	1,8 <sup>+0.10</sup> / <sub>-0</sub>	M4
Ø 14 H7 <sup>+0.018</sup> / <sub>-0</sub>	5 H9 <sup>+0.030</sup> / <sub>-0</sub>	2,3 <sup>+0.10</sup> / <sub>-0</sub>	M4
Ø 15 H7 <sup>+0.018</sup> / <sub>-0</sub>	5 H9 <sup>+0.030</sup> / <sub>-0</sub>	2,3 <sup>+0.10</sup> / <sub>-0</sub>	M4
Ø 16 H7 <sup>+0.018</sup> / <sub>-0</sub>	5 H9 <sup>+0.030</sup> / <sub>-0</sub>	2,3 <sup>+0.10</sup> / <sub>-0</sub>	M4
Ø 18 H7 <sup>+0.018</sup> / <sub>-0</sub>	6 H9 <sup>+0.030</sup> / <sub>-0</sub>	2,8 <sup>+0.10</sup> / <sub>-0</sub>	M5
Ø 19 H7 <sup>+0.021</sup> / <sub>-0</sub>	6 H9 <sup>+0.030</sup> / <sub>-0</sub>	2,8 <sup>+0.10</sup> / <sub>-0</sub>	M5
Ø 20 H7 <sup>+0.021</sup> / <sub>-0</sub>	6 H9 <sup>+0.030</sup> / <sub>-0</sub>	2,8 <sup>+0.10</sup> / <sub>-0</sub>	M5
Ø 22 H7 <sup>+0.021</sup> / <sub>-0</sub>	6 H9 <sup>+0.030</sup> / <sub>-0</sub>	2,8 <sup>+0.10</sup> / <sub>-0</sub>	M5
Ø 24 H7 <sup>+0.021</sup> / <sub>-0</sub>	8 H9 <sup>+0.036</sup> / <sub>-0</sub>	3,3 <sup>+0.20</sup> / <sub>-0</sub>	M6
Ø 25 H7 <sup>+0.021</sup> / <sub>-0</sub>	8 H9 <sup>+0.036</sup> / <sub>-0</sub>	3,3 <sup>+0.20</sup> / <sub>-0</sub>	M6
Ø 28 H7 <sup>+0.021</sup> / <sub>-0</sub>	8 H9 <sup>+0.036</sup> / <sub>-0</sub>	3,3 <sup>+0.20</sup> / <sub>-0</sub>	M6
Ø 30 H7 <sup>+0.021</sup> / <sub>-0</sub>	8 H9 <sup>+0.036</sup> / <sub>-0</sub>	3,3 <sup>+0.20</sup> / <sub>-0</sub>	M6
Ø 32 H7 <sup>+0.025</sup> / <sub>-0</sub>	10 H9 <sup>+0.036</sup> / <sub>-0</sub>	3,3 <sup>+0.20</sup> / <sub>-0</sub>	M8
Ø 35 H7 <sup>+0.025</sup> / <sub>-0</sub>	10 H9 <sup>+0.036</sup> / <sub>-0</sub>	3,3 <sup>+0.20</sup> / <sub>-0</sub>	M8
Ø 38 H7 <sup>+0.025</sup> / <sub>-0</sub>	10 H9 <sup>+0.036</sup> / <sub>-0</sub>	3,3 <sup>+0.20</sup> / <sub>-0</sub>	M8
Ø 40 H7 <sup>+0.025</sup> / <sub>-0</sub>	12 H9 <sup>+0.043</sup> / <sub>-0</sub>	3,3 <sup>+0.20</sup> / <sub>-0</sub>	M10
Ø 42 H7 <sup>+0.025</sup> / <sub>-0</sub>	12 H9 <sup>+0.043</sup> / <sub>-0</sub>	3,3 <sup>+0.20</sup> / <sub>-0</sub>	M10
Ø 45 H7 <sup>+0.025</sup> / <sub>-0</sub>	14 H9 <sup>+0.043</sup> / <sub>-0</sub>	3,8 <sup>+0.20</sup> / <sub>-0</sub>	M12
Ø 48 H7 <sup>+0.025</sup> / <sub>-0</sub>	14 H9 <sup>+0.043</sup> / <sub>-0</sub>	3,8 <sup>+0.20</sup> / <sub>-0</sub>	M12
Ø 50 H7 <sup>+0.025</sup> / <sub>-0</sub>	14 H9 <sup>+0.043</sup> / <sub>-0</sub>	3,8 <sup>+0.20</sup> / <sub>-0</sub>	M12