

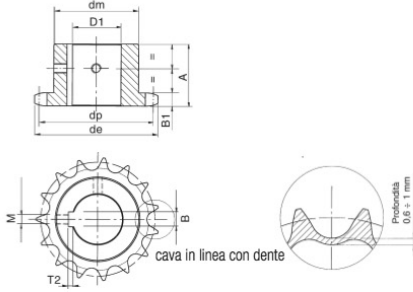
# PIGNONI SEMPLICI DENTI TEMPRATI AD INDUZIONE FORO + CAVA + FORI VITE



*R. Garotti & F. gliò* s.r.l.

## 1/2" x 5/16" 08B-1

per catene a rulli secondo  
DIN 8187 - ISO/R 606



Denti temprati ad induzione HRC 45 ÷ 53

### PIGNONE

LARGHEZZA DENTE PIGNONE B<sub>1</sub> 7.2 mm

### CATENA

PASSO 12.7 mm

LARGHEZZA INTERNA 7.75 mm

RULLO Ø 8.51 mm

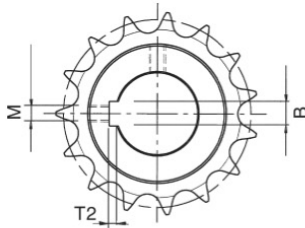
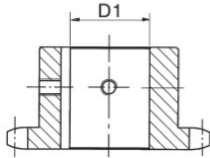
**MATERIALE:** C 45 UNI 7845

Z	d <sub>o</sub>	d <sub>p</sub>	d <sub>m</sub>	A	D <sub>1</sub>	Z	d <sub>o</sub>	d <sub>p</sub>	d <sub>m</sub>	A	D <sub>1</sub>	Z	d <sub>o</sub>	d <sub>p</sub>	d <sub>m</sub>	A	D <sub>1</sub>
12	53.9	49.07	33	28	12	17	74	69.11	52	28	15	23	98.1	93.27	70	28	20
					14						16						22
					15						18						24
					16						19						25
					18						20						28
					19						22						30
					20						24						32
					22						25						35
					24						28						38
13	57.9	53.06	37	28	12						16	24	102.1	97.29	70	28	20
					14	18	77.8	73.14	56	28	18						22
					15						19						24
					16						20						25
					18						22						28
					19						24						30
					20						25						32
					22						28						35
					24						30						38
14	61.6	57.07	41	28	14						16	25	105.8	101.33	70	28	20
					15	19	82	77.16	60	28	19						22
					16						20						24
					18						22						25
					19						24						28
					20						25						30
					22						28						32
					24						30						35
					25						32						38
15	65.9	61.09	45	28	14						16	27	114	109.4	70	30	22
					15	20	85.8	81.19	64	28	19						25
					16						20						28
					18						22						30
					19						24						32
					20						25						35
					22						28						38
					24						30						
					25						32						
					28						35						
					30						38						
16	69.5	65.1	50	28	15						16	30	126.3	121.5	80	30	25
					16	21	90.1	85.22	68	28	19						28
					18						20						30
					19						22						32
					20						24						35
					22						25						
					24						28						
					25						30						
					28						32						
					30						35						

**PIGNONI SEMPLICI**  
**DENTI TEMPRATI AD INDUZIONE**  
**FORO + CAVA + FORI VITE**



**Cave DIN 6885 - UNI 6604**



cava in linea con dente

<b>D<sub>1</sub></b> Foro	<b>B</b> Larghezza cava	<b>T<sub>2</sub></b> Profondità cava	<b>M</b> Viti
Ø 12 H7 <sup>+0.018</sup> / <sub>-0</sub>	4 H9 <sup>+0.030</sup> / <sub>-0</sub>	1,8 <sup>+0.10</sup> / <sub>-0</sub>	M4
Ø 14 H7 <sup>+0.018</sup> / <sub>-0</sub>	5 H9 <sup>+0.030</sup> / <sub>-0</sub>	2,3 <sup>+0.10</sup> / <sub>-0</sub>	M4
Ø 15 H7 <sup>+0.018</sup> / <sub>-0</sub>	5 H9 <sup>+0.030</sup> / <sub>-0</sub>	2,3 <sup>+0.10</sup> / <sub>-0</sub>	M4
Ø 16 H7 <sup>+0.018</sup> / <sub>-0</sub>	5 H9 <sup>+0.030</sup> / <sub>-0</sub>	2,3 <sup>+0.10</sup> / <sub>-0</sub>	M4
Ø 18 H7 <sup>+0.018</sup> / <sub>-0</sub>	6 H9 <sup>+0.030</sup> / <sub>-0</sub>	2,8 <sup>+0.10</sup> / <sub>-0</sub>	M5
Ø 19 H7 <sup>+0.021</sup> / <sub>-0</sub>	6 H9 <sup>+0.030</sup> / <sub>-0</sub>	2,8 <sup>+0.10</sup> / <sub>-0</sub>	M5
Ø 20 H7 <sup>+0.021</sup> / <sub>-0</sub>	6 H9 <sup>+0.030</sup> / <sub>-0</sub>	2,8 <sup>+0.10</sup> / <sub>-0</sub>	M5
Ø 22 H7 <sup>+0.021</sup> / <sub>-0</sub>	6 H9 <sup>+0.030</sup> / <sub>-0</sub>	2,8 <sup>+0.10</sup> / <sub>-0</sub>	M5
Ø 24 H7 <sup>+0.021</sup> / <sub>-0</sub>	8 H9 <sup>+0.036</sup> / <sub>-0</sub>	3,3 <sup>+0.20</sup> / <sub>-0</sub>	M6
Ø 25 H7 <sup>+0.021</sup> / <sub>-0</sub>	8 H9 <sup>+0.036</sup> / <sub>-0</sub>	3,3 <sup>+0.20</sup> / <sub>-0</sub>	M6
Ø 28 H7 <sup>+0.021</sup> / <sub>-0</sub>	8 H9 <sup>+0.036</sup> / <sub>-0</sub>	3,3 <sup>+0.20</sup> / <sub>-0</sub>	M6
Ø 30 H7 <sup>+0.021</sup> / <sub>-0</sub>	8 H9 <sup>+0.036</sup> / <sub>-0</sub>	3,3 <sup>+0.20</sup> / <sub>-0</sub>	M6
Ø 32 H7 <sup>+0.025</sup> / <sub>-0</sub>	10 H9 <sup>+0.036</sup> / <sub>-0</sub>	3,3 <sup>+0.20</sup> / <sub>-0</sub>	M8
Ø 35 H7 <sup>+0.025</sup> / <sub>-0</sub>	10 H9 <sup>+0.036</sup> / <sub>-0</sub>	3,3 <sup>+0.20</sup> / <sub>-0</sub>	M8
Ø 38 H7 <sup>+0.025</sup> / <sub>-0</sub>	10 H9 <sup>+0.036</sup> / <sub>-0</sub>	3,3 <sup>+0.20</sup> / <sub>-0</sub>	M8
Ø 40 H7 <sup>+0.025</sup> / <sub>-0</sub>	12 H9 <sup>+0.043</sup> / <sub>-0</sub>	3,3 <sup>+0.20</sup> / <sub>-0</sub>	M10
Ø 42 H7 <sup>+0.025</sup> / <sub>-0</sub>	12 H9 <sup>+0.043</sup> / <sub>-0</sub>	3,3 <sup>+0.20</sup> / <sub>-0</sub>	M10
Ø 45 H7 <sup>+0.025</sup> / <sub>-0</sub>	14 H9 <sup>+0.043</sup> / <sub>-0</sub>	3,8 <sup>+0.20</sup> / <sub>-0</sub>	M12
Ø 48 H7 <sup>+0.025</sup> / <sub>-0</sub>	14 H9 <sup>+0.043</sup> / <sub>-0</sub>	3,8 <sup>+0.20</sup> / <sub>-0</sub>	M12
Ø 50 H7 <sup>+0.025</sup> / <sub>-0</sub>	14 H9 <sup>+0.043</sup> / <sub>-0</sub>	3,8 <sup>+0.20</sup> / <sub>-0</sub>	M12